

# First Presbyterian Church

July 2024



## Message From Your Soon-To-Be Commissioned Ruling Elder

Greetings! I am honored to have the opportunity to grow in my service to this congregation. The path that brought me to this point began in 2011 when I was first ordained an elder. In 2018, I felt called to do something more, but I wasn't sure what exactly. I started studies that led to earning a certificate in congregational leadership from the University of Dubuque Theological Seminary in 2021. Coincidentally, our church found itself without a pastor that summer. It has been a joy to preach regularly since then. However, I have felt at times like we were just treading water, waiting for...something. Perhaps waiting for an installed pastor to come and lead us. This past December, I rotated off of session and floated the idea that perhaps I could be that something.

Recently, someone asked, "How will this be any different from what you have been doing?" The biggest difference will be that I am charged with the spiritual leadership of the congregation. My vision is that over time, I will meet with each member of the church, individually or as a couple if that seems appropriate. I will be seeking ways that our church can better serve its members, while also seeking ways that our church can turn its gaze outwards.

My commissioning service is scheduled for August 11 at 4 pm in our sanctuary, assuming all goes well at the presbytery meeting. More details to come. My actual start date will be September 1. However, summer is when I have more flexible time, so I plan to get a jump start on meeting individually with members. My plan is to start with officers (elders, deacons, trustees, clerk, treasurer) and staff, then broaden to everyone in the congregation. At a pace of one or two visits per week, I expect the process to take about a year. I would dearly appreciate you making time to meet with me whenever I contact you. This is an important part of my ministry and of our work together. We can meet in your home, in my home or office, over coffee or lunch or dinner, or at church.

One other thing: Communication is essential. Please do not ever assume that I know something unless you have spoken to me or emailed me about it. There is a research professor in my department who said to me one day, "Of course you know about all of the problems we've been having with IT over the past six months." I said, "No, actually. This is the first I've heard of it. What's going on?" He had been struggling for months without ever informing me, so I couldn't help him. Please, if there is ever someone in the hospital, or someone in spiritual distress, or some issue with something I have said or done, TELL ME. I cannot fix every problem—that's God's job, not mine—but I cannot fix any problem that I do not know about.

Thank you for the opportunity to serve God's people through the ministries of this congregation. Please pray for me, for each member, and for all of us together as we begin this next phase.

Peace,

Jonathan

**The Committee on Ministry requires the following areas of training for CRE candidates:**

- Biblical Studies
- Preaching
- Pastoral Care
- Reformed Theology and Sacraments
- Presbyterian Polity
- Field Internship
- Leading Worship (including administering sacraments when authorized)
- Healthy Boundary Training

**What is the process for examination and eligibility for ministry?**

The Committee on Ministry is charged with conducting a background check and the examination of those it certifies as prepared to be and suitable for the role of Commissioned Ruling Elder.

**Who supervises the CRE?**

The CRE shall work under the supervision of the Committee on Ministry. A minister of the Word and Sacrament shall be assigned as a mentor.

**What can the CRE be authorized by COM to do?**

**A CRE can perform one or more of the following services:**

- Prepare and lead worship
- Provide administrative leadership in this ministry
- Administer the Lord's Supper only in this ministry
- Administer the Sacrament of Baptism only in this ministry
- Have a voice in meetings of presbytery
- Have a vote in meetings of the presbytery (such vote to be counted as a ruling elder)

First Presbyterian Church of Rolla  
Rolla, Missouri

Covenant/Contract with CRE (Commissioned Ruling Elder)

1. The covenant/contract between the Session of the Rolla Presbyterian Church, and the CRE applicant Jonathan Kimball for the purposes of supplying ministerial services to the church. This contract is 20 percent of full time for a period of one year.
2. The CRE is accountable to the Session and the Presbytery through the Committee on Ministry.
3. It is agreed that this contract may be terminated upon 30 days written notice by either the CRE or the Session.

The CRE will fulfill the following responsibilities:

1. Preaching and leading worship on half of the Sundays, including Christmas Eve and Easter. Less vacation and study leave, this constitutes 24 sermons annually,
2. Preaching and leading worship once monthly at the Presbyterian Manor.
3. Presiding at the Lords Supper at FPC Rolla and the Presbyterian Manor.
4. Baptizing new members, subject to Session approval.
5. Presiding at weddings, funerals and memorial services for church members as requested.
6. Serving on three committees, Worship & Music, Congregational Life and the Administrative Committee. Participation on committees will be in a non-voting role.
7. Pastoral Care visits will consist of 1-2 visits per week in conjunction with the Church Deacons.
8. Providing spiritual leadership, particularly around new initiatives and community connections.
9. Representation at Presbytery.
10. The contract would be for one year with a comprehensive review after 6 months. Vacation time and study time will be proportional to his part-time appointment. All vacation will be approved by the session and reported to Presbytery.
  1. Regarding preaching, there will be 2 vacation days and 1 day of professional development provided by the church. The math is 12 months X 2 = 24 plus Maundy Thursday, Ash Wednesday and Christmas Eve. This leaves 27 Sundays minus 3 days professional development and Vacation Days making 24 Sundays, as listed above.
  2. Regarding other, non-preaching duties listed, Kimball will receive 4 weeks of vacation and 2 weeks of study leave.

## Report of PNC

### Explanation of Commissioned Ruling Elder

After the service on June 9, an informational discussion was held to update the information from the PNC and explain the CRE program. The contract for Jonathan Kimball to serve as CRE was reviewed.

The PNC was installed on January 28, 2022. We met once a week to prepare the MIF (Ministry Information Form). It was approved by the Session, Committee on Ministry, the Prsbyter of John Calvin Presbytery and the congregation. We began sending invitations for interviews in September. We received 74 Pastor Information Forms. We sent 32 invitations for interviews. We received 13 responses. Eleven were not interested. Two responded favorably and we interviewed them. One decided on a position with another church and the other did not appear to be a good fit for our church. Nineteen did not respond.

At that time, we became concerned about being financially able to pay a full time pastor. As of November, 2022, the minimum salary as determined by PCUSA is \$46,000 plus 39% to Board of Pensions and \$1,500 for continuing education. This comes to a total of \$63,940. After much prayer and discussion, the Session decided to start looking for a part-time pastor. We are currently working with a new computer system that has been difficult. We have submitted a new Ministry Discernment Profile for correction. We will be continuing to search for a part-time pastor.

We are fortunate as our denomination offers the option of the Commissioned Ruling Elder. Jonathan started working to become a CRE several years ago. He has completed his qualifications for this certification. The CRE will be a temporary solution. We will continue to search for a part-time pastor.



# Commissioned Ruling Elder

## What is a Commissioned Ruling Elder (CRE)?

A CRE is an elder in the Presbyterian Church (USA) who is granted a local commission by the presbytery to limited pastoral service as assigned by the presbytery.

## What is the ruling elder commissioned to do?

A commissioned ruling elder is responsible to watch over the people and provide for their worship and nurture.

Permission for specific activities will be included in the approval of the Committee on Ministry.

## What is the CRE application process?

- A CRE must be a Ruling Elder in the PC(USA);
  - Must be endorsed by home church;
  - Must submit application for approval by the Committee on Ministry;
- Must complete a psychological evaluation administered by LeaderWise.

## Who certifies a CRE candidate as prepared to be and suitable for the role of CRE?

The Committee on Ministry (COM) interviews, reviews application, determines what training is required, and certifies to the presbytery that a candidate is ready to serve as a CRE.

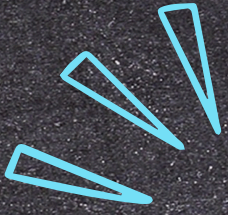
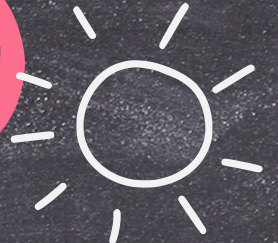
## How is a CRE compensated?

A Commissioned Ruling Elder shall receive compensation in accordance with the presbytery's Compensation and Personnel Policy for Pastors.

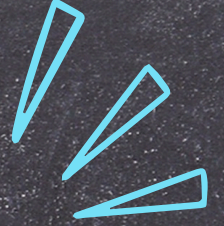




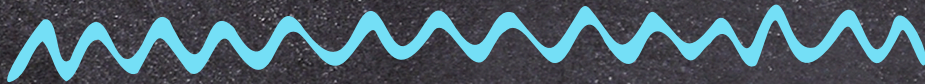
BACK TO



SCHOOL



CRAYON DRIVE



WE WILL BE COLLECTING

CRAYOLA BRAND 24



PACK CRAYONS



NOW THROUGH JULY





Join Us For



# Christmas Joy Drive FOR GRACE

Spread holiday cheer  
and make a difference  
in our community!

07/01/2024

07/31/2024

## HOW CAN YOU HELP?

- DONATE TOYS FOR AGES
- 0 TO 3 YEARS
- MONETARY DONATIONS

*Spread the Joy!*





# Deacons News

We currently have 8 deacons visiting people that are ill or bereaved or sending cards. We also assist Jonathan in the monthly communion service at the manor and give rides to folks that don't drive. We take home communion to shut in members and assist in communion in the sanctuary if needed, We have assistance from many other members as needed for transportation and the coordination and preparation of funeral or memorial services and receptions that we unfortunately have to do periodically. The food that our members prepare is wonderful, but we do have a need for someone a little younger and stronger to help put away tables and chairs after functions in fellowship hall. Please let Amy or Carrie, Melba or any of the deacons know if you are available and have a good back and can go on our list for take down of tables and chairs if we need help with this.

We do not meet in the summer.

If you see someone with a need, please let a deacon know.



# PRESCHOOL News 🍏

We've transitioned to our summer mode with several outside activities - until the heat shows up. We took a trip to the park, had a picnic outside and had some messy fun in the e yard. When it was too hot to be out, we held a camping day in the Fellowship. We also celebrated the dads or dudes in our lives by hosting Donuts with Dudes on the Friday before Father's Day.



Our playground upgrades are starting to show up. We are looking forward to having these changes.

*Happy Birthday wishes go out to*

5th Ken Kwantes

6th Mary Kwantes

7th Clayton Read

9th Ed Schmidt

11th Lydia Rodriguez-Medina

13th Steve Day



## *Anniversaries*

16th Lee & Ruby Malone

23rd Luke & Kristin Gutches

26th Steve & Susan Bowles



If you would like your birthday or anniversary shared please update in the office with Katie.

# *PRAYER REQUEST*

*Connie & Bob Dewitt* - Continuing health care needs  
after stroke and surgery.

*Ruby & Lee Malone* - Residents of Silverstone.

*Bob Yenzler* - Continuing health challenges.

*Katherine Cook Russell* - Suffering from dementia.

*Bill Neely*- Headaches, Back & Hip pain.

*Family of Fredi Zobrist*- Passing of Fredi.

*Family of Joann Crabtree*, (Lori's sister-in Law)  
- who died recently.

*Pat Look* - fell June 12, recovering well at home.

*Linda Rose* - fell May 20, recovering at home.

*Judy Fox's brother, Bill*. He had a brain bleed and fell  
several times.

*Family of Betty Pietsch*-Passing of Betty.

Please pray for those named and their families  
as well as their caregivers.

The prayer request will start over every two months.  
If you have someone that needs put on or taken off the list,  
Please contact Katie in the office.

